

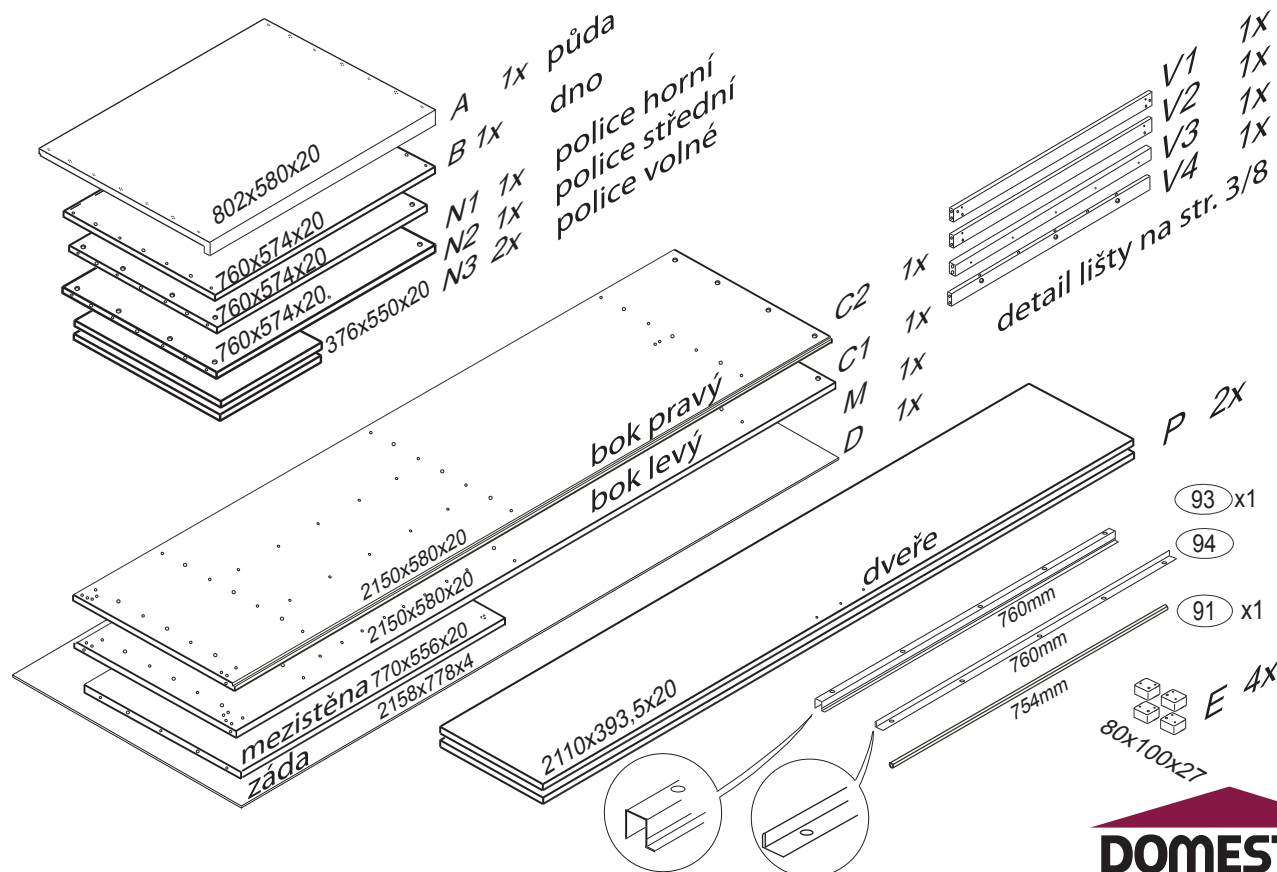
802x600x2197



**Kolíky vždy narazte nejprve do otvorů ve hranách dílců, je nutné je zarazit se stejným přesahem. V případě, že některý kolík přesahuje, je nutné jej zakrátit. Dílce srážejte kladivem pouze přes dřevěnou podložku.**

K 5x  
770x556x20

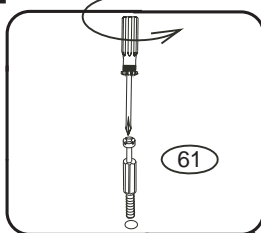
1/8



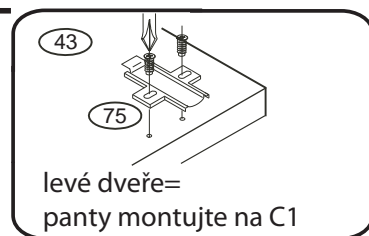
**DOMESTAV** S.r.o.  
nábytek z masivu

F154

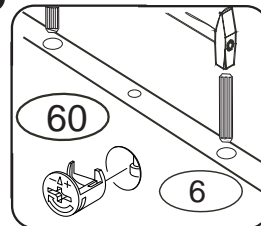
1



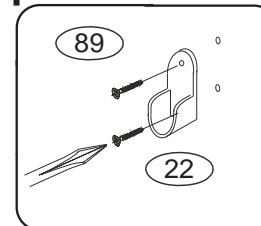
2



3

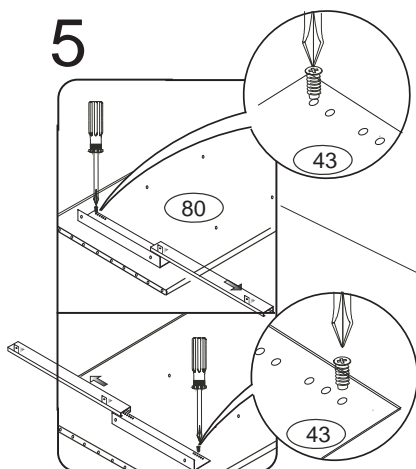


4

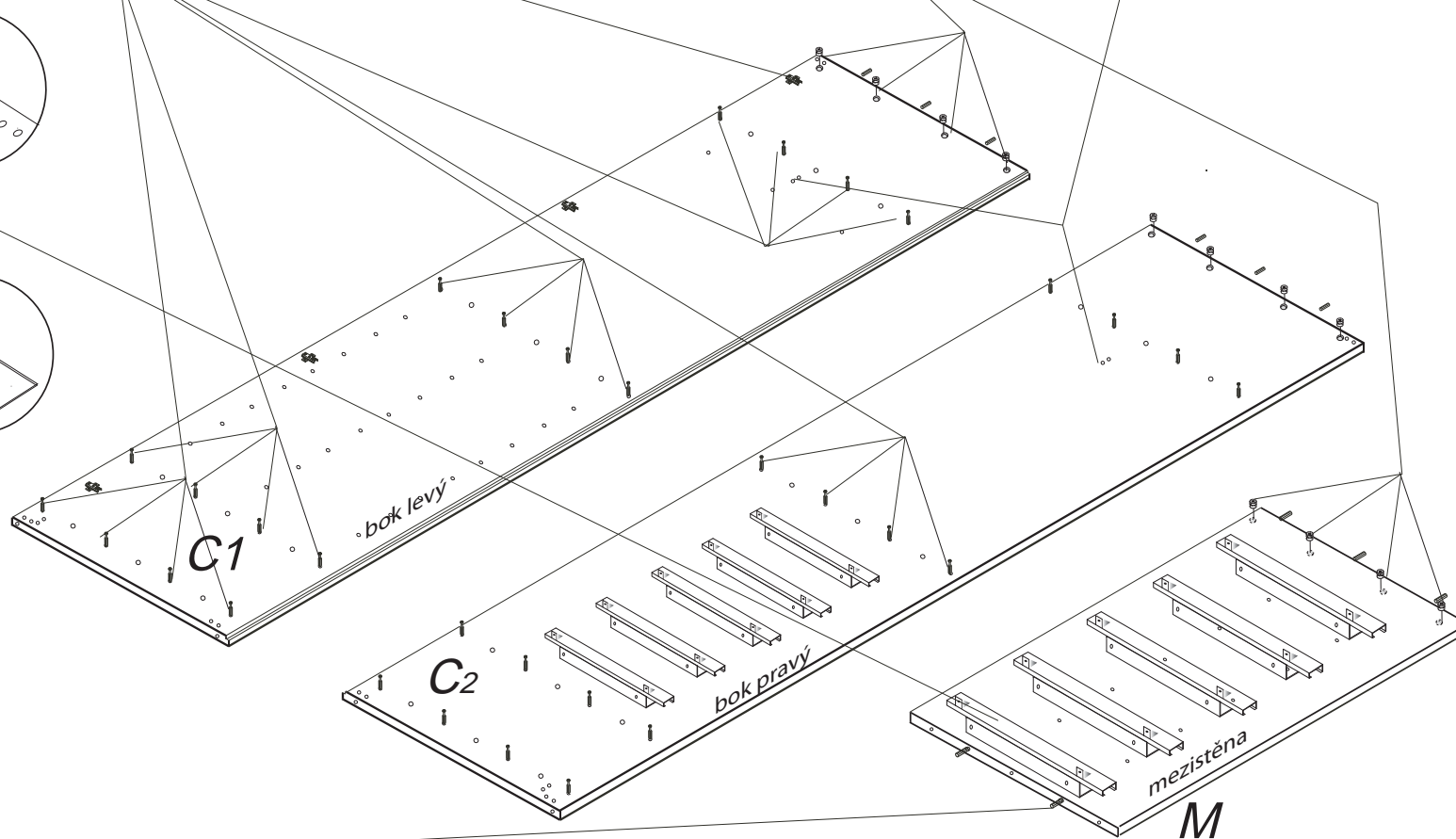
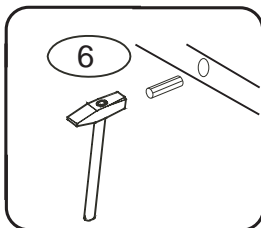


2/8

5

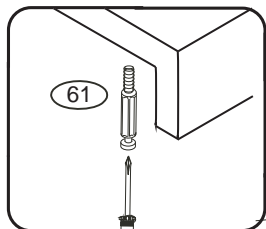


6

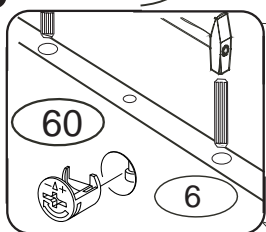


F154

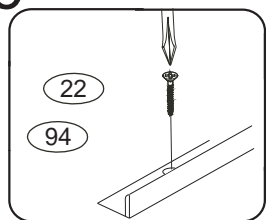
7



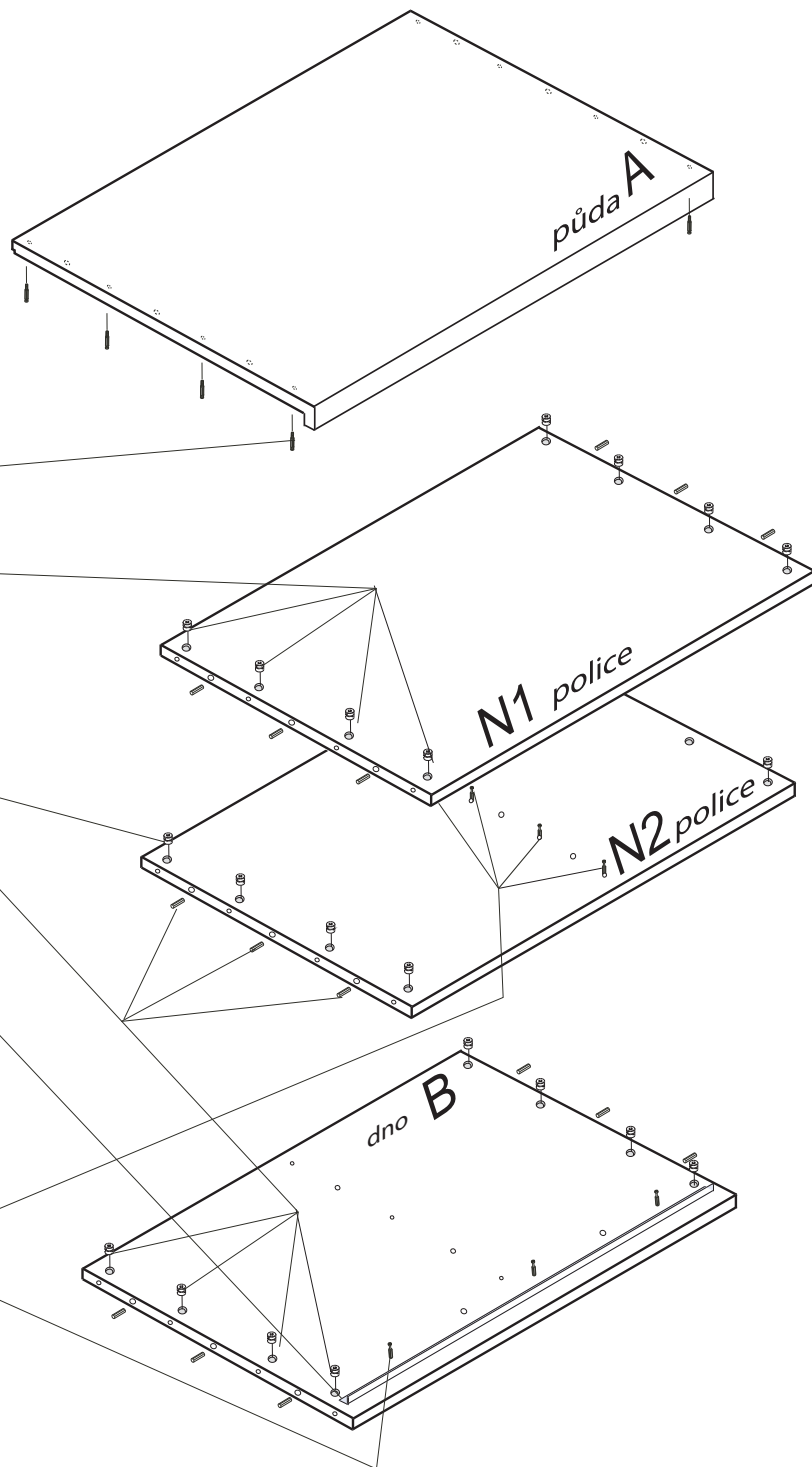
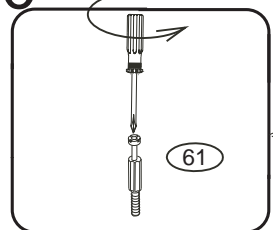
8



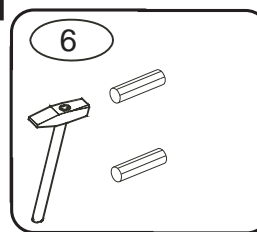
9



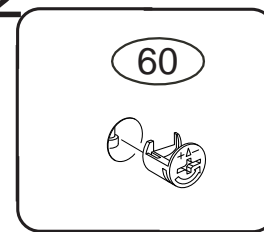
10



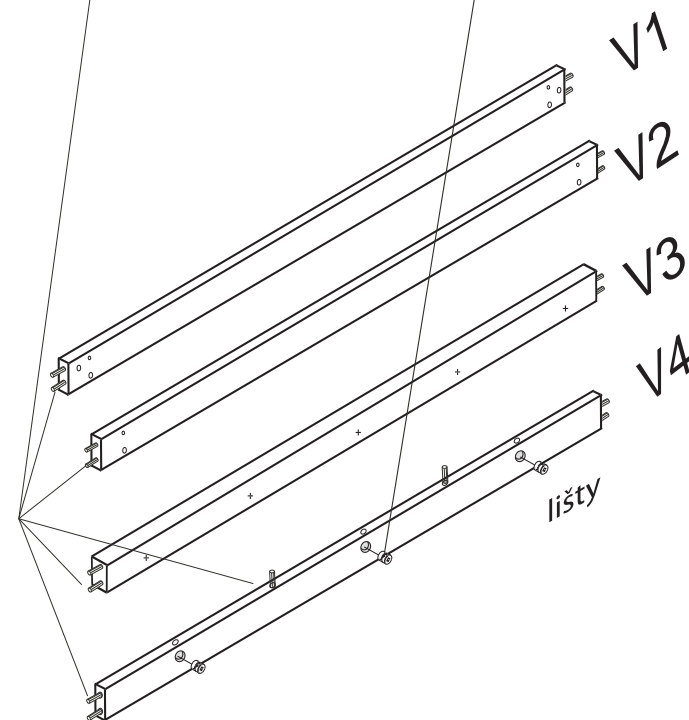
11



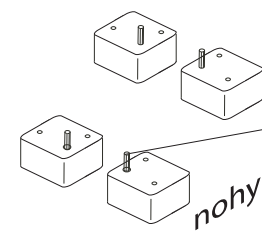
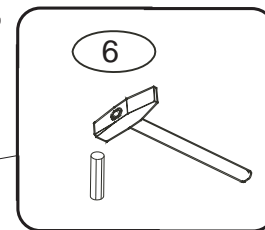
12



3/8



13



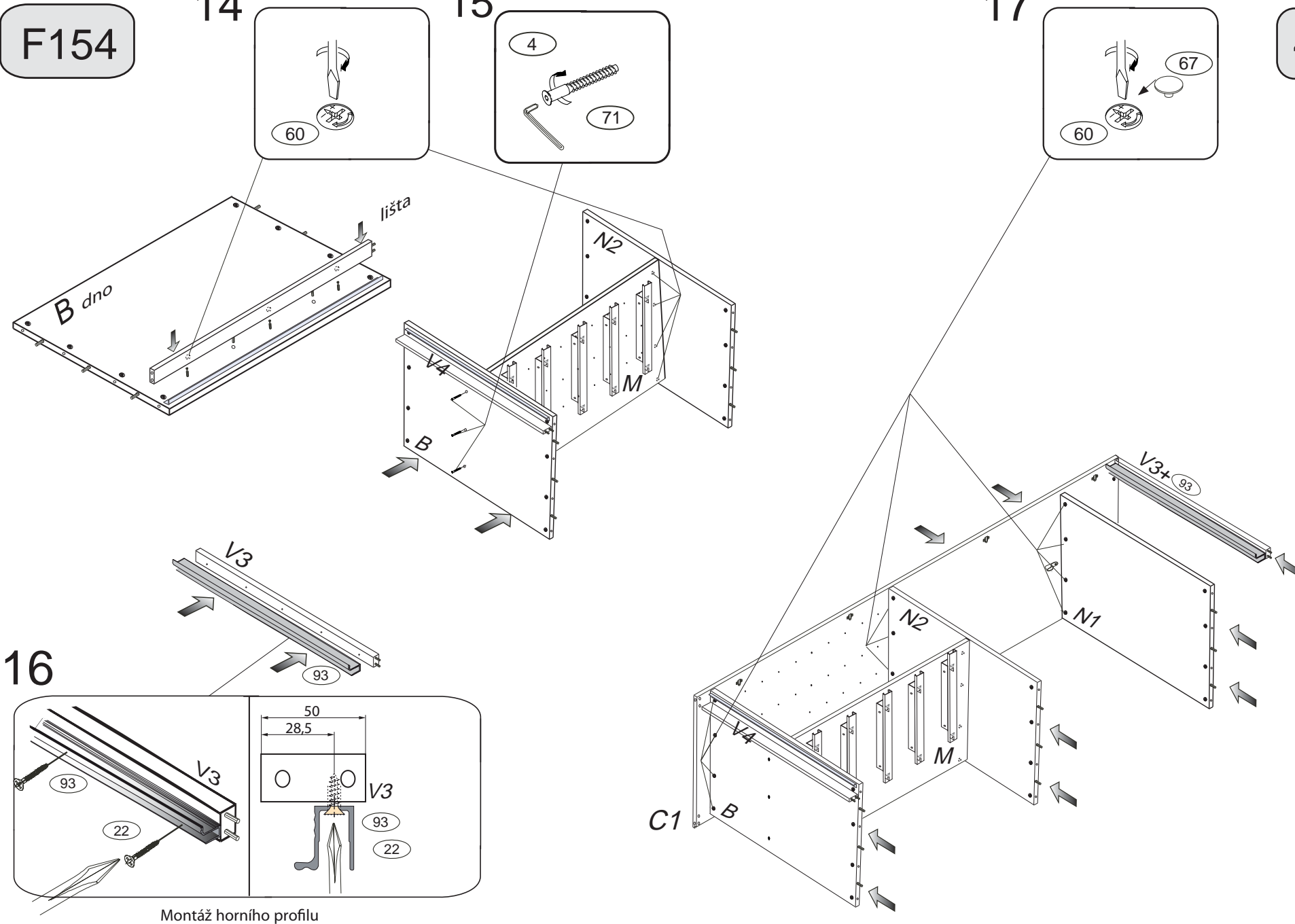
F154

14

15

17

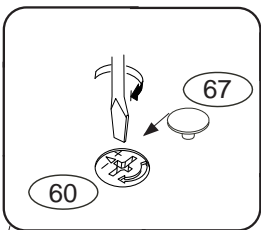
4/8



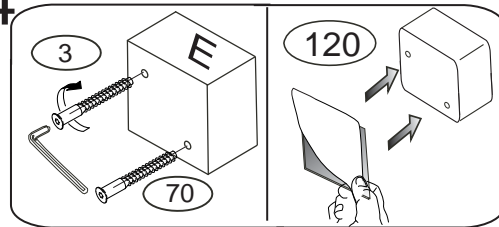
Montáž horního profilu

F154

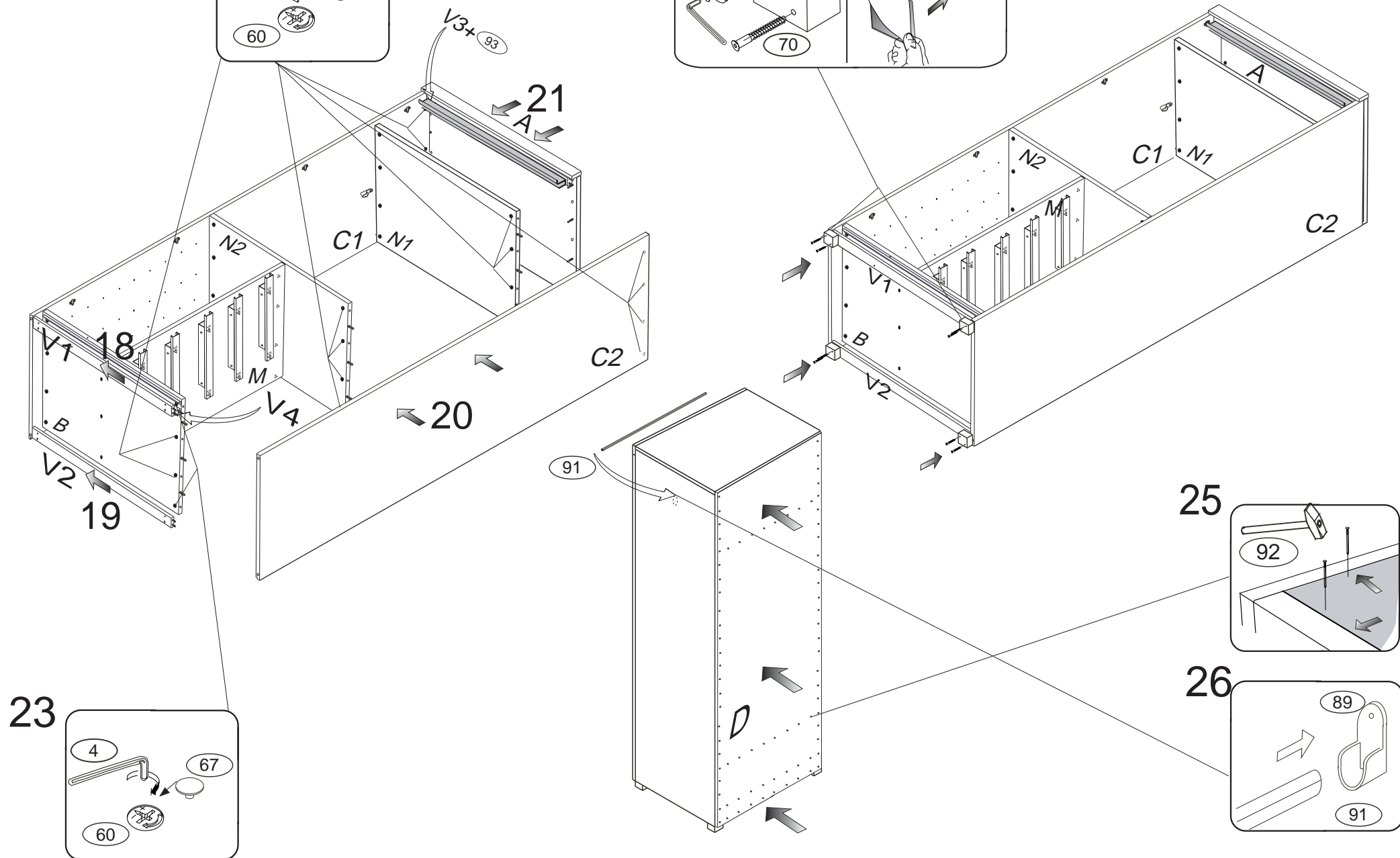
22



24



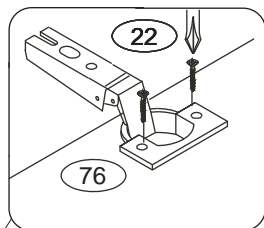
5/8



F154

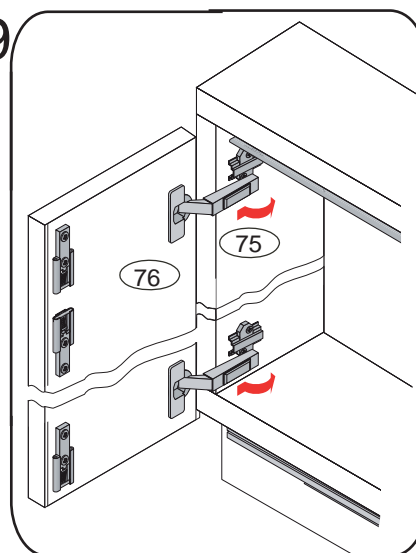
# MONTÁŽ KOVÁNÍ WING LINE 770

27

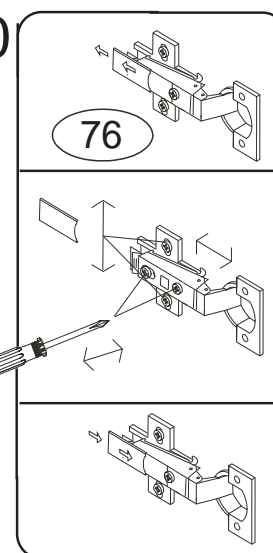


Příprava dveří

29



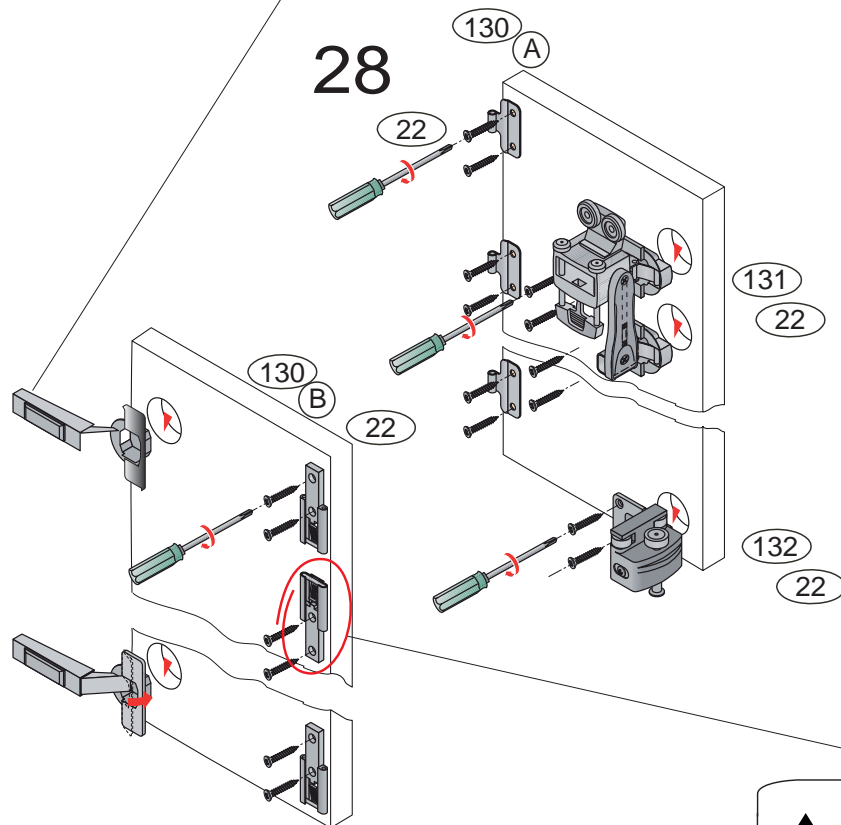
30



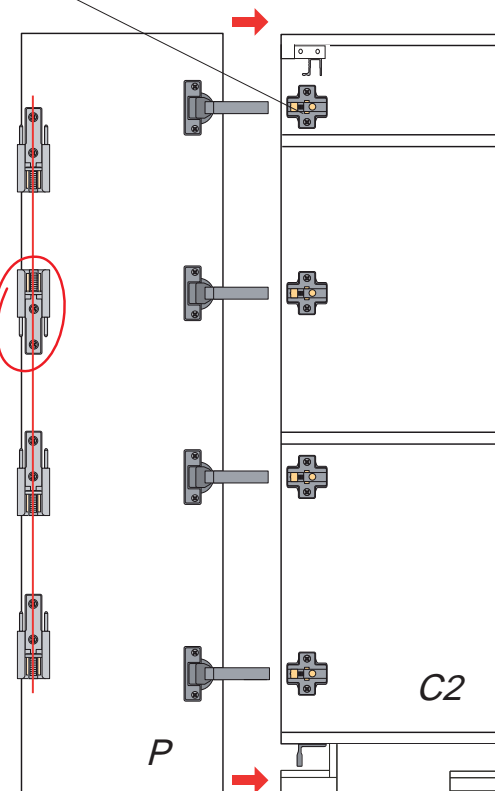
Upravte  
polohu  
dveří

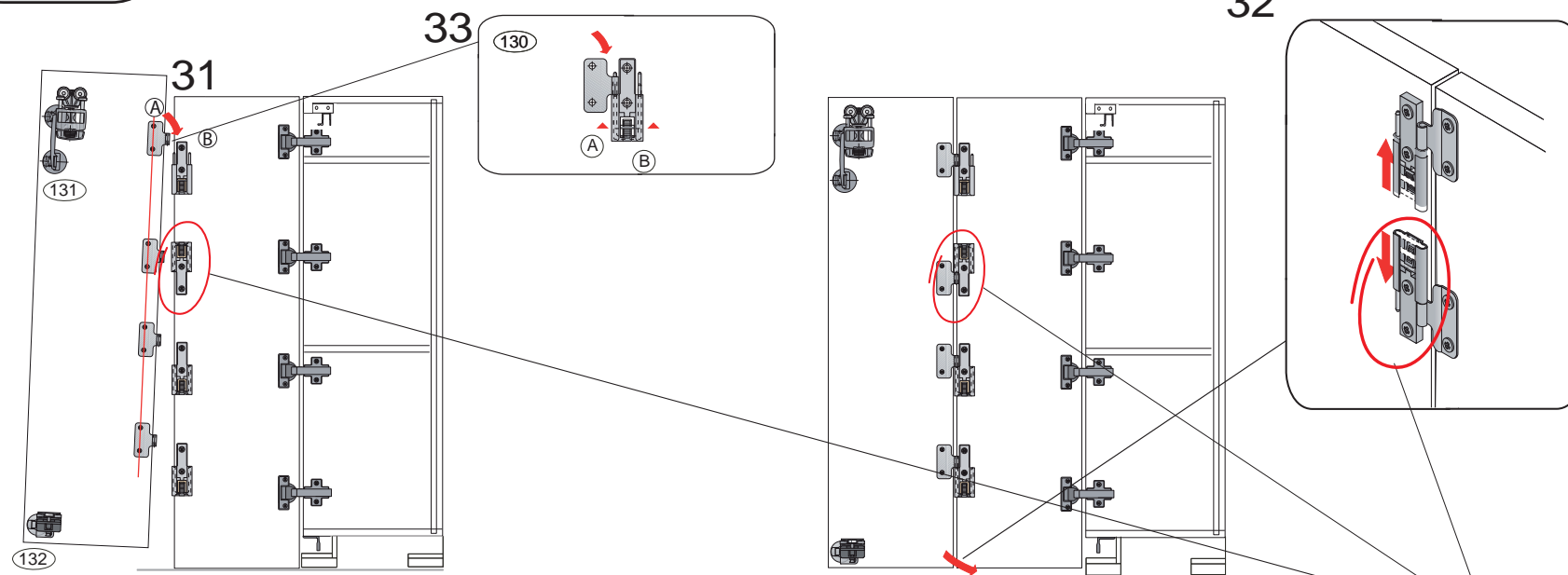
6/8

28

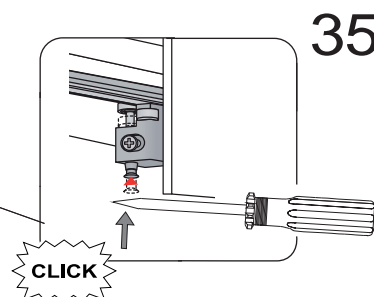
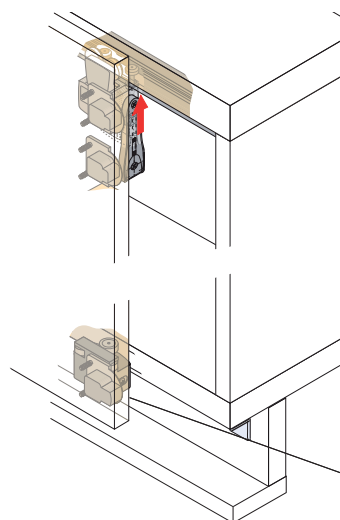
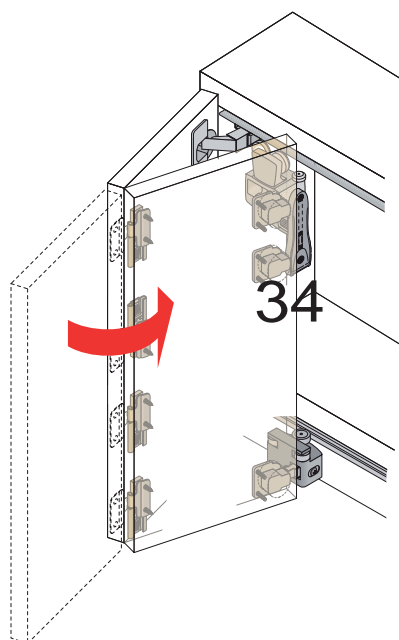


Druhý pant shora při montáži  
otočte o 180°.  
Zajišťuje dveře proti vypadávání.





⚠ Druhý pant shora je namontován opačně.  
Zajišťuje dveře proti vypadávání.





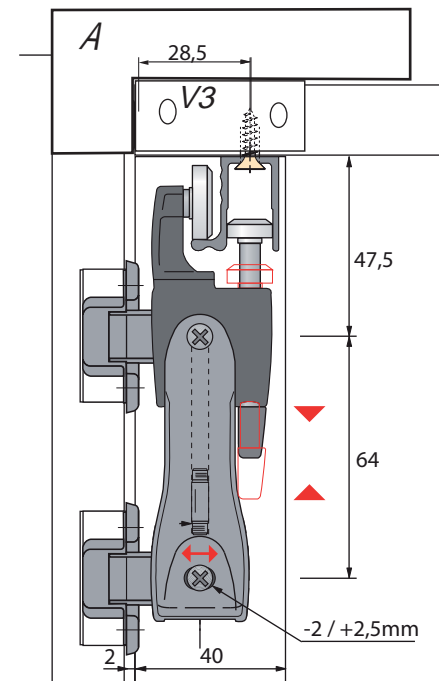
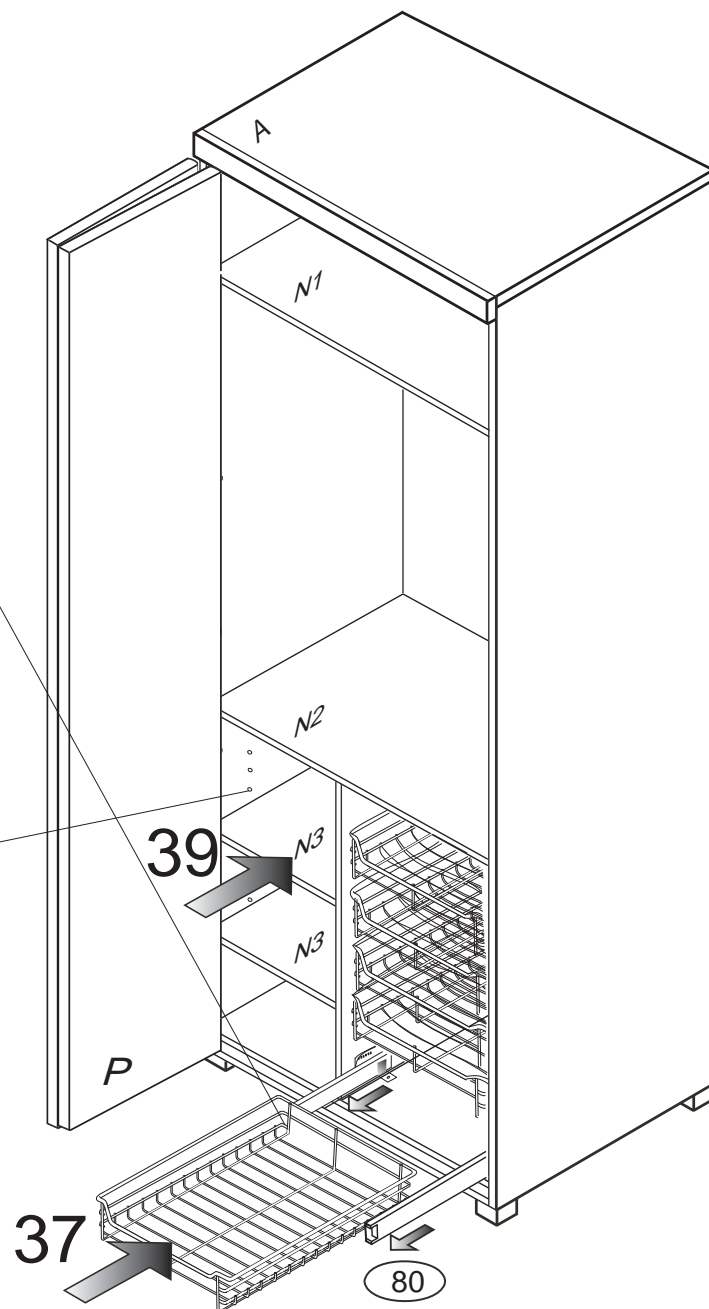
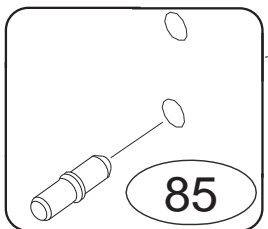
F154

8/8

36



38



40

Upravte  
polohu  
dveří

